



e

S

## BOARD MEMBERS

Clay Braziller, Chairperson  
Don Danbrook, Treasurer  
Rob Attwell, Member  
Drew Collier, Member  
Laurie Hill, Member  
Ed Levy, Member  
Doug Purdie, Member  
Paul Shore, Member

## EXECUTIVE TEAM

Gary Birch, O.C., Ph. D., P. Eng.  
Executive Director

Greg Pyc  
National Operations Manager

## MANAGEMENT TEAM

Greg Pyc  
Western Regional Manager

Diann Coates  
Prairie Regional Manager, Admin.

Elnora Lamb  
Prairie Regional Manager, Program

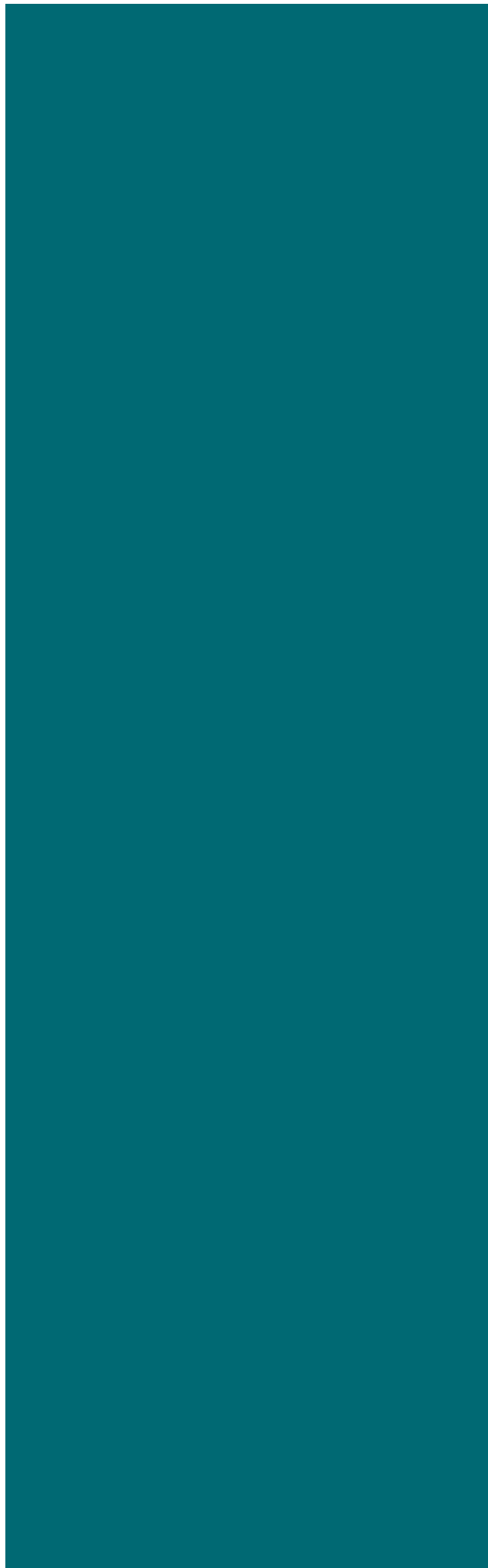
Cheryl Colmer  
Central Regional Manager

Diana Hall  
Atlantic Regional Manager

Chad Leaman  
e-Learning Manager

Harry Lew  
Research and Development Manager

“It was a landmark year, not only for the Neil Squ6.b T landmark







## BRENDA DISCOVERS HER MANY SKILLS AND TALENTS

Brenda, who has multiple sclerosis, joined the Employ-Ability program at a time in her life when she was ready to make big changes; her children were grown and she was eager to find new strategies to help her gain more financial independence.

One of the impacts that multiple sclerosis has had on Brenda is that her hands quickly become exhausted. Typing is a challenge for her. While attending the Employ-Ability program at the Neil Squire Society, Brenda began using the speech recognition software, Dragon NaturallySpeaking®. The software transcribes what Brenda speaks into a microphone, freeing her hands from the tiring task of typing.

During her time in the program, Brenda discovered that she had many skills and talents, and that her true passion was to work in the counseling field coupled with spiritual guidance. Brenda said, “I decided to return to university because of the Neil Squire Society and what you did for me. You helped me realize that I have the ability to do this.”

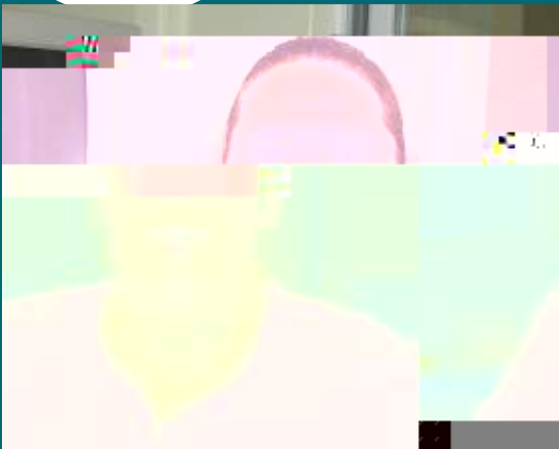
Brenda is now pursuing her Bachelor of Arts degree in Human Relations and Spirituality at Saint Paul University in Ottawa.

“Brenda did not waste time”, says Employ-Ability Facilitator, Joanne Ahern. “When she left our program she moved on with her action plan with the motivation that is required to pursue a goal. This has helped make her achievements a reality.”

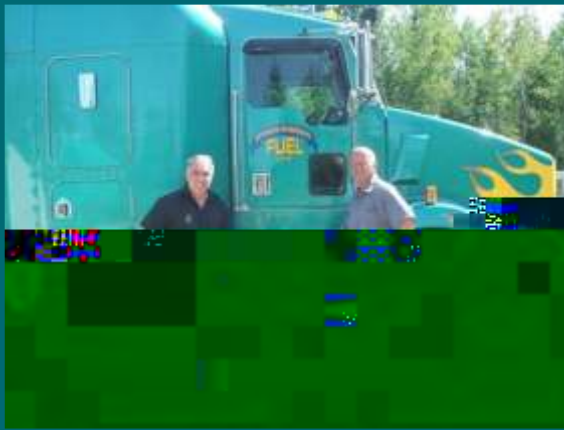
## ”I HAVE SKILLS THAT I NEVER KNEW I HAD”

Maureen was referred to the Neil Squire Society’s Employ-Ability program by her case worker at Ontario Works. She was seeking assistance in developing a realistic employment action plan that focused on her strengths and abilities. Maureen has mild osteoporosis and flat foot syndrome. In addition, she suffered a back injury approximately fe make multiland talents, this.”sec2 >>tyocoijuryts hrrio Ahome.t AOtt gthto TD(a

“You made me realize that I have the ability to do this.”



“If it wasn't for all of you this dream job would not have been possible.”



“Not since the inclusion of disability in the Charter of Rights and Freedoms have Canadians with disabilities seen such substantive attention given to the rights of persons with disabilities.”





STATEMENT OF FINANCIAL POSITION AS AT MARCH 31

ASSETS	2010 \$	2009 \$
Current		
Cash	1,4000	62,126
Restricted cash	60,000	90,000
Accounts receivable	464,271	568,476
Prepaid expenses and other assets	28,867	22,064
	554,538	742,666
Capital assets	44,398	65,882
	589,936	808,548
LIABILITIES		
Current		

STATEMENT OF OPERATIONS YEAR ENDED MARCH 31

REVENUE	2010 \$	2009 \$
Grants	1,791,040	2,542,424
Services	943,917	1,109,039
Training fees	305,881	155,043
Gaming	90,000	76,073
Donations - cash	80,698	118,313
- in kind	6,139	-
Interest and other	9,298	7,976
	3,226,973	4,008,868
<b>EXPENSES</b>		
Salaries and benefits	2,167,556	2,440,318
Consulting and contracts	304,648	535,560
Rent	351,299	368,970
Equipment lease and maintenance - expenditures	146,500	150,017
- in kind	94,557	104,911
Client tuitions	6,139	-
Travel	99,067	oc(Donal assessEq

